

WENTYLATOR PROMIENIOWY

RADIAL FAN

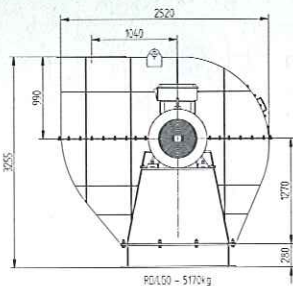
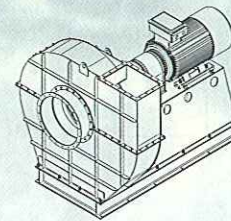
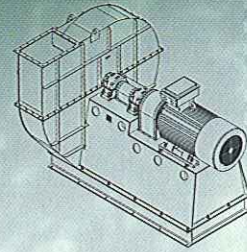
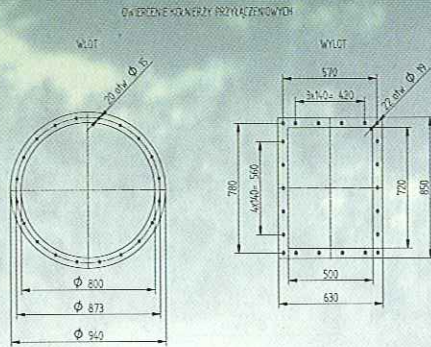
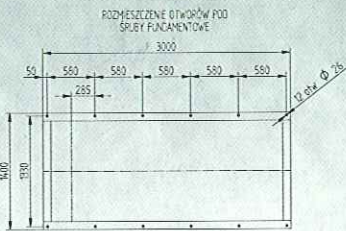
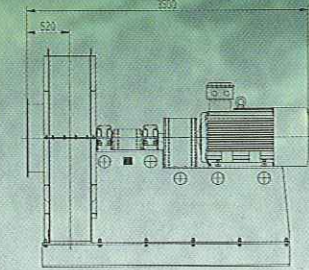
RADIALVENTILATOR

Радиальный вентилятор

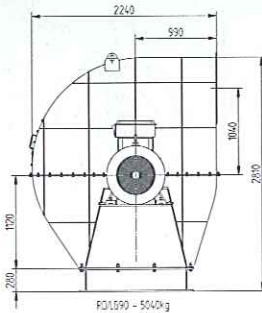
WPHs 80



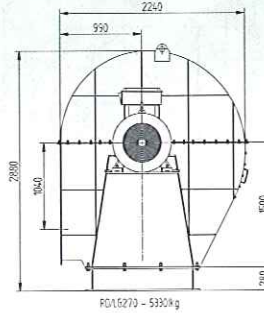
KARTA KATALOGOWA
WENTYLATOR PROMIENIOWY WPHs-80/2,0-0,85 - NAPĘD 4 POŚREDNI PRZEZ SPRZĘGŁO
SIŁNIK 2SIE35ML4A, 250kW, 1490obr/min



PD100 - 5170kg



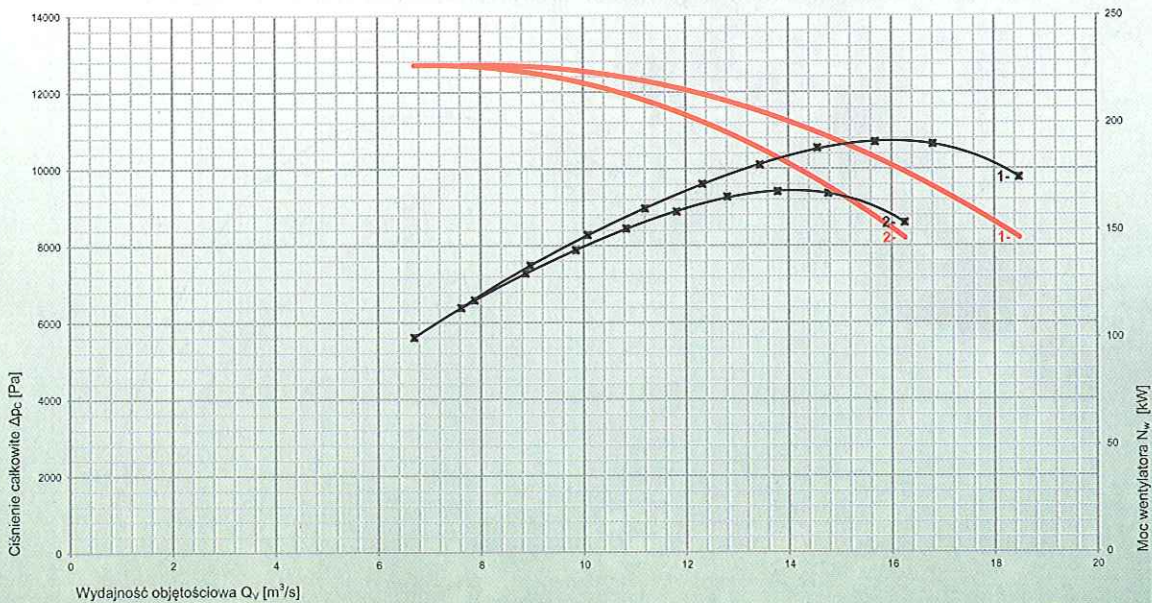
PD1090 - 5040kg



PD15270 - 5330kg

CHARAKTERYSTYKA PRZEPLYWOWA WENTYLATORA PROMIENIOWEGO - f(Δp_c, Q_v, N_w)

1 - WPHs-80/2,0-0,85 - 2SIE35ML4A / 250kW / 1490obr¹
2 - WPHs-80/2,0-0,75 - 2SIE315M4C / 200kW / 1490obr¹



1 - 0,85 / T=20°C / ρ=1,21kg/m³ / n=1490obr¹ / N_s=191kW / N_e=230kW (250kW) / L_{0A}=118dB(A)
2 - 0,75 / T=20°C / ρ=1,21kg/m³ / n=1490obr¹ / N_s=168kW / N_e=200kW (200kW) / L_{0A}=117dB(A)